

A faint, light-colored illustration in the background shows a large tree on the left and a bird, possibly a hawk or eagle, in flight on the right. The scene is set against a light beige background.

Lopez Island School District Principal Report

School Board Meeting
January 24, 2024



Elementary Highlights

- ❖ January Character Awards - Feb. 2
- ❖ 5th Grade Fieldtrip to Whale Museum - Feb. 15
- ❖ 6th Grade Fieldtrip to Whale Museum - February 17
- ❖ STEAM Fair - March 5
- ❖ 5th Grade Islandwood Trip - March 11
- ❖ MS Volleyball - 6 6th Graders
- ❖ Attendance
 - November 89.14%
 - December 88.20%





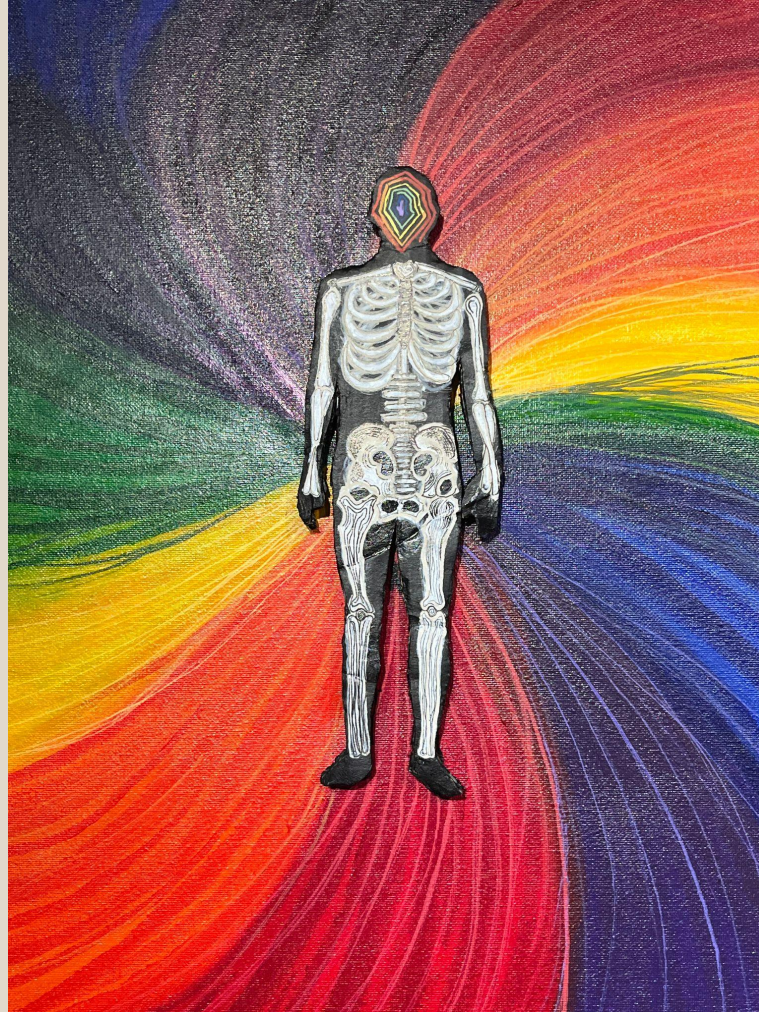
Secondary Highlights

- ❖ Sports
 - High School Basketball
 - Middle School Volleyball
- ❖ Middle School Dance - Friday, Jan. 26
- ❖ Seal of Biliteracy
- ❖ High School Art Show at Chimera
- ❖ Term 2 Character Awards - Feb. 2
- ❖ Safe San Juans
- ❖ Classroom Norms
- ❖ Planning for Intensives
- ❖ Average Daily Attendance
 - November 85.53%
 - December 80.82%





K-12



- ❖ **Mastery Based Learning Cohort 2**
 - Professional Learning Community
 - Winter Gathering
 - Coaching
 - Site Visits
 - LISD Team

- ❖ **New Staff/Roles**
 - Robb Ellis
 - Sarah Hurley
 - Katrina Lovejoy

- ❖ **Music Program**
 - Orchestra
 - Choir

- ❖ **Library**
 - 3419 books checked out this year
 - 772 books checked out by 4th graders!

- ❖ **Yearbook**

- ❖ **LIFE Program**
 - Valentine Fundraiser

- ❖ **i-Ready Testing**



Appreciations

- ❖ School Board
- ❖ Pack
- ❖ LIPTSA
- ❖ ASB
- ❖ LIEF
- ❖ LIFRC
- ❖ Bus Drivers
- ❖ New Employees



A faint, stylized illustration of a forest scene. On the left is a tall, dark evergreen tree. In the center, a bear is depicted in profile, walking towards the right. To the right of the bear, a fox is shown in profile, also walking towards the right. The background is a light, neutral color, and the entire scene is rendered in a muted, brownish-grey tone.

Questions?